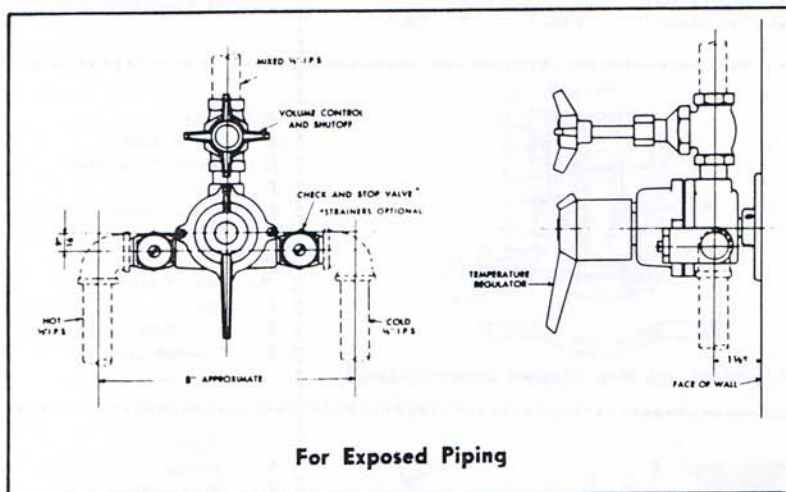
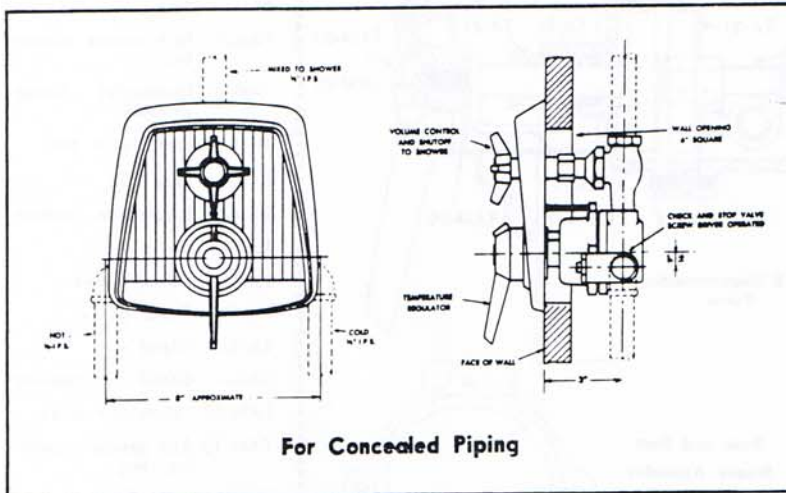


manufactured by **LEONARD**  
the most respected name in water temperature  
control for half a century

## Roughing-in-Measurements



## INSTALLATION INSTRUCTIONS

This unit is furnished complete with inlet checkstops (screwdriver operated) on inlets and volume control and shutoff with 4-arm handle on outlet. THESE FITTINGS ARE ALREADY IN PLACE. DO NOT REMOVE THEM. Opening in wall must be left large enough to give access to these fittings.

White lead, pipe cement or flux should be used sparingly. After connections are made to the valve, flush pipes thoroughly to remove excess cement to prevent it from hardening on the working parts of the valve.

# INSTRUCTIONS FOR CLEANING AND SERVICING

M-10

# Showermaster

T. M.

## TO REMOVE WALL FLANGE (TAM-31) FURNISHED WITH M-10-C SHOWERMMASTER FOR CONCEALED PIPING:

Remove center button and holding screw on both volume control handle TAM-35 and pointer escutcheon TAM-12 and pull them off. Remove wall flange screw TA-33 and lift off wall flange. This will expose valve body and supply fittings.

### GENERAL INSTRUCTIONS

1. Shut off hot and cold supplies to valve by closing stops. If valve is equipped with strainers (optional equipment) unscrew strainer cap with strainer screen attached—remove from body of fitting—clean and replace.
2. Remove the four cover screws TA-16 and lift off cover TA-15. (The thermostat group TAG-2 will become disengaged and remain in the cover. See section 2-B for cleaning instructions.)

#### A. To clean port sleeve assembly TA-G1:

Remove base stud TA-5. Back off port sleeve nut TA-3 as far as it will go into base. Then slide part TA-G1 toward port sleeve nut and lift out of valve base. To clean parts TA-G1, use a fine grade of steel wool. DO NOT USE ABRASIVES (SUCH AS EMERY CLOTH OR SAND PAPER). After cleaning, wash parts in clean water and reassemble in valve base. On reassembling port sleeve assembly, BE SURE TO INSTALL WITH LONG END IN BASE AND SHORT END AT PORT SLEEVE NUT. Be sure to locate one set of port slots facing directly toward the front of the valve. Tighten port sleeve nut TA-3 just enough to hold port sleeve in place. (Do not cramp or distort port sleeve by exerting too much pressure when tightening port sleeve nut).

#### B. To clean thermostat group assembly TA-G2:

Remove retaining ring TAM-30 and pointer rod bracket TAM-32, loosen packing gland nut TA-23, then remove thermostat group by pushing rod through cover. (BE CAREFUL NOT TO PULL COILS OUT OF SHAPE). If deposit has collected on the thermostatic coil, clean it off with a brush in cleaning solution and wash well before reassembling. Cleaning solution should be non-corrosive and should not contain grit which would injure the metallic surface.

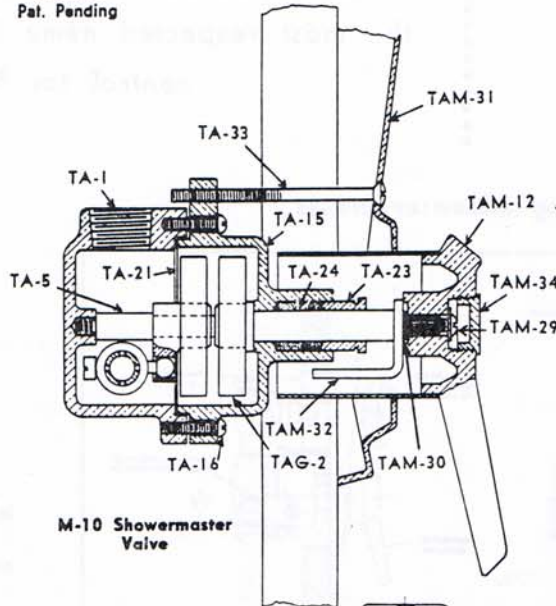
#### C. To Reassemble:

Be sure port sleeve assembly is in place and is working freely from side to side. Reinstall base stud TA-5, then place thermostat group TA-G2 on base stud and be sure driving ball on port sleeve assembly TA-G1 is inserted in hole on lower coil bracket. Move thermostat back and forth to be sure all parts are free. Replace cover TA-15 on valve base with wall flange screw hole at top and install the TA-16 cover screws. Tighten gland nut and turn on hot and cold water supplies at checkstops.

#### D. To install pointer escutcheon on M-10-C:

Replace wall flange and tighten wall flange screw to hold flange firmly against the wall. Replace volume control handle, holding screw and center button. On M-10-C or M-10-E place pointer rod bracket on serrated rod and move rod to hot until the highest temperature desired is reached. Then remove bracket and replace on serrated rod against the stop on the valve cover. Replace retaining ring, escutcheon pointer, holding screw and pointer cap.

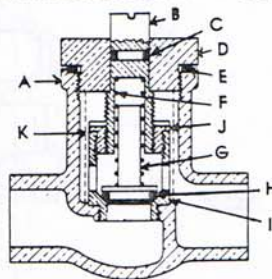
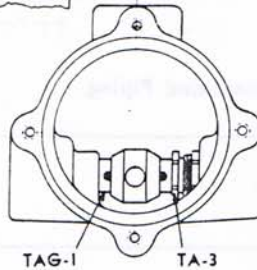
Patented  
Pat. Pending



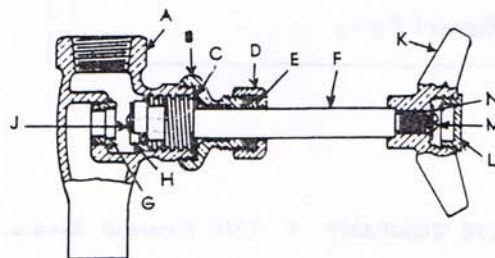
M-10 Showermaster Valve

Base and Port Sleeve Assembly

**NOTE:**  
Be sure one set of port slots are assembled toward front of valve as shown.



M-56-1/2" Check and Stop (Strainer Screen Optional)



M-57-1/2" Volume Control and Shutoff

### Parts List

No.	Name
TA-1	Base
TAG-1	Port sleeve assembly
TAG-2	Thermostat Group assembly
TA-3	Port sleeve nut
TA-5	Base stud
TAM-12	Escutcheon pointer
TA-15	Cover
TA-16	Cover screws
TA-21	Cover gasket
TA-23	Gland nut
TA-24	Gland nut packing
TAM-29	Escutcheon screw
TAM-30	Rod bracket retaining ring
TAM-31	Wall flange
TAM-32	Pointer rod bracket
TA-33	Wall flange screw
TAM-34	Escutcheon Cap

A	Body
B	Upper Stem
C	Upper Stem Seal
D	Cap Washer
E	Spring
G	Lower Stem
H	Seat Washer
I	Seat
J	Seat Cap
K	Strainer Screen

A	Body
B	Bonnet
C	Bonnet Washer
D	Bonnet Cap
E	Rod Packing
F	Rod and Cap
G	Seat
H	Seat Washer
J	Seat Washer Screw
K	4-Arm Handle
L	Handle Cap
M	Handle Cap Screw
N	Handle Cap Screw

Serial number of M-10 Showermaster Valve is stamped in the upper right quadrant of the valve body cover TAM-15. This number must be furnished on all parts orders.