

# Thermostatic Mixing Valve

# Cabinet Assembly

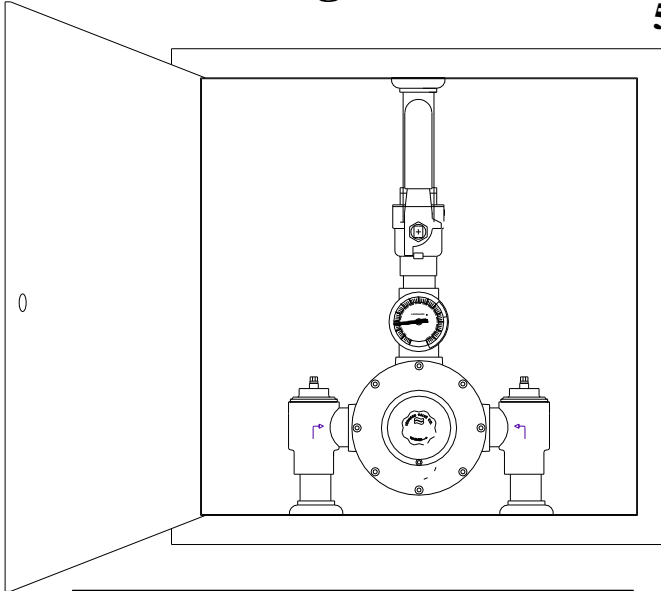
**XL-186-200-SW-LF \_\_\_\_\_**

**5-208 GPM (18.9-787 l/min)**

***ECO-MIX*™**

**XL-186-200-SW-LF**

**\_\_ XL-186-200-SW-LF 2" inlets and 2" outlet**



		PRESSURE DROP										
MIN+ FLOW	5	10	15	20	25	30	35	40	45	50	PSI	
	0.3	0.7	1	1.4	1.7	2.1	2.4	2.8	3.1	3.4	BAR	
5	69	96	117	135	148	163	174	188	198	208	GPM	
18.9	216	363	443	511	560	617	659	712	750	787	l/min	

- Copper encapsulated thermostatic assembly with Teflon coated shuttle
- Combination checkstops, sweat inlets, wall support
- Locking temperature regulating handle
- Tempered outlet ball valve
- Color coded dial thermometer (0 to 140°F, -10° to 60°C)
- Temperature adjustment range, 95-135°F (35-57°C) \*\*
- Maximum operating pressure 125PSI
- Recessed cabinet, with door, left hand hinge and flange, cylinder lock
- Bottom inlets, top outlet
- Factory assembled and tested
- Select valve piping finish and cabinet below
- See Flow Capacity Chart

**Valve is ASSE 1017 listed.**

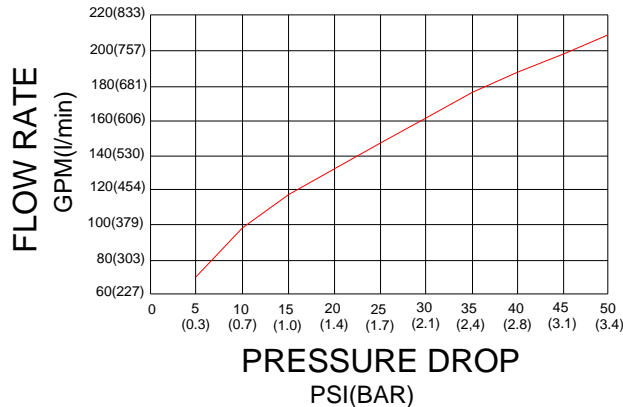


**Valve is CUPC listed**



**OPTIONS:**

- \_\_ SUFFIX BWE REC-** baked white enamel recessed
- \_\_ SUFFIX STSTL REC-** Stainless Steel recessed cabinet
- \_\_ SUFFIX BWE EXP-** baked white enamel exposed
- \_\_ SUFFIX STSTL EXP-** Exposed cabinet, Stainless steel
- \_\_ SUFFIX RHH -** Right hand hinge
- \_\_ SUFFIX TOP-** Top inlets
- \_\_ SUFFIX VP-** View port



**Valve assembly is certified to meet Low-Lead requirements of wetted surface area containing less than 0.25% lead by weight. All other fittings and components, the sum total of which comprise the wetted surface of this product contains less than one quarter of one percent of lead by weight.**

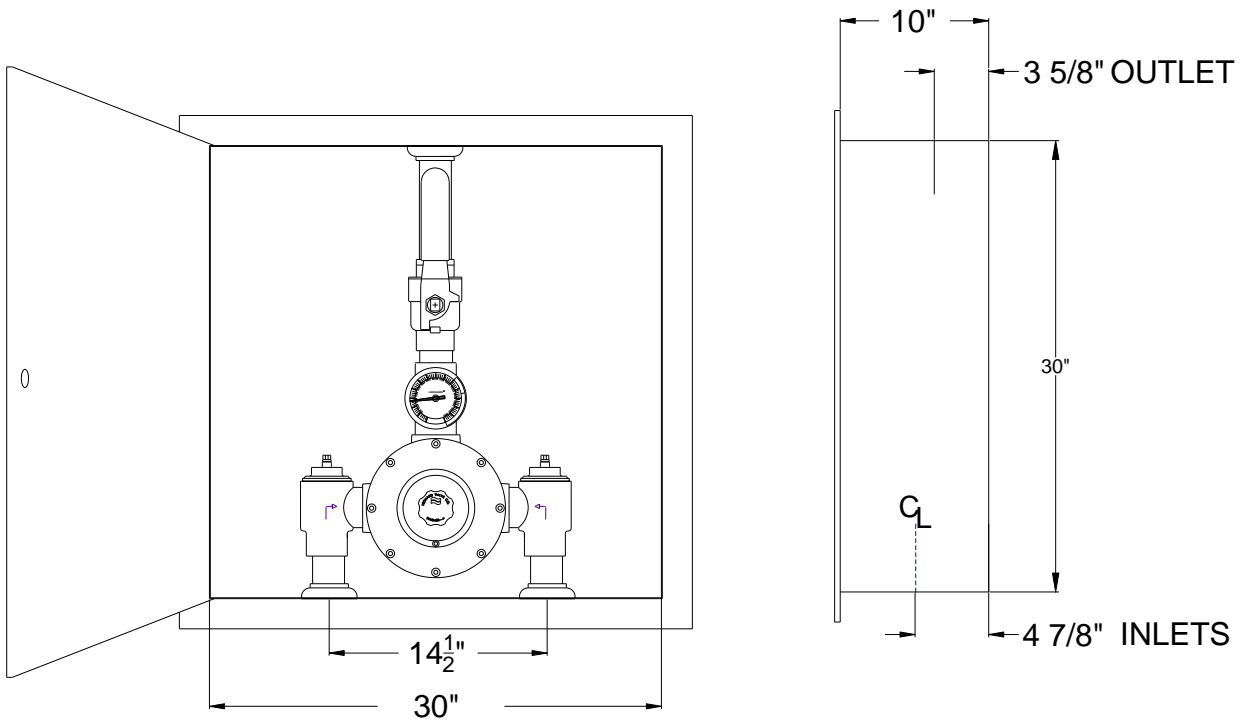
**+NOTE:** The valve will maintain temperature with 0.5GPM flow from the domestic hot water loop when properly installed near the hot water source with a continuously operating recirculation pump.

**CAUTION!** All thermostatic water mixing valves have limitations. They will NOT provide the desired accuracy outside of their flow capacity range. Consult the Flow Capacity Chart and DO NOT OVERSIZE. Minimum flow must be no less than as indicated.

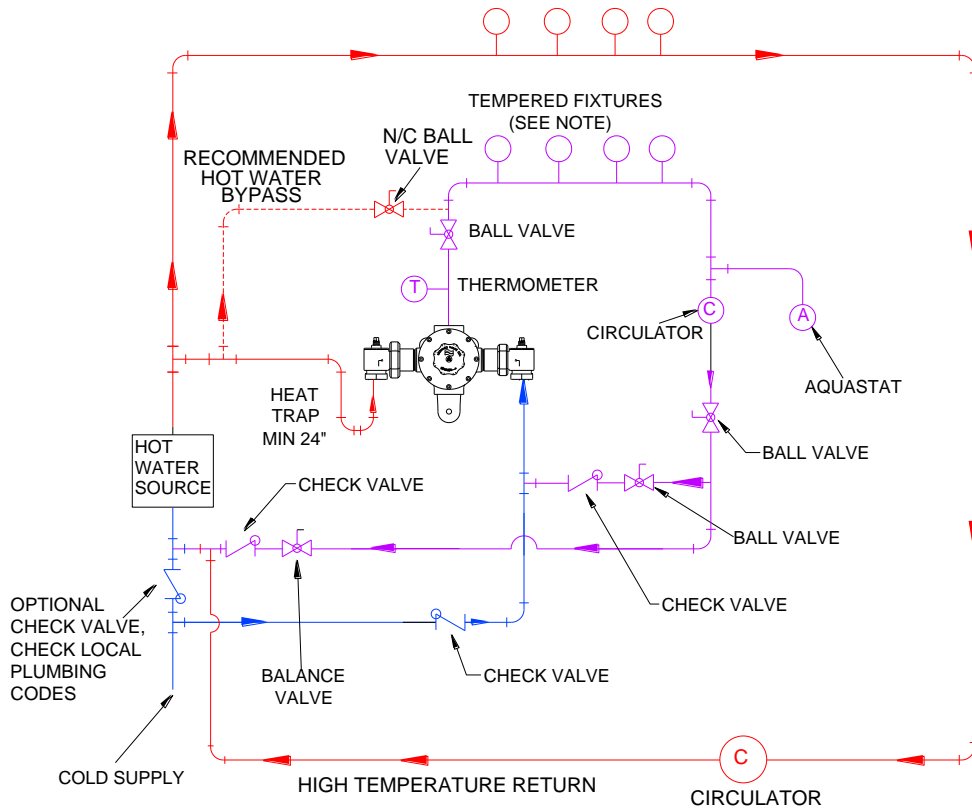


**WARNING:** This product can expose you to chemicals including lead, which is known to the State of California to cause cancer. For more information, go to [www.P65Warnings.Ca.gov](http://www.P65Warnings.Ca.gov)

**\*\*NOTE:** For temperatures outside of this valve's stated range, please see our line of bi-metal valves.



HIGH TEMPERATURE FIXTURES (IF APPLICABLE)



<b>Engineer's Approval</b>	Job # _____
	Arch/Eng. _____
	Contractor _____



1360 Elmwood Avenue, Cranston, RI 02910 USA  
 Phone: 401.461.1200 Fax: 401.941.5310  
 Email: [info@leonardvalve.com](mailto:info@leonardvalve.com)  
 Web Site: <http://www.leonardvalve.com>